

Southwind District
K-State Research and Extension
Allen • Neosho • Bourbon

Pie & Coffee Series

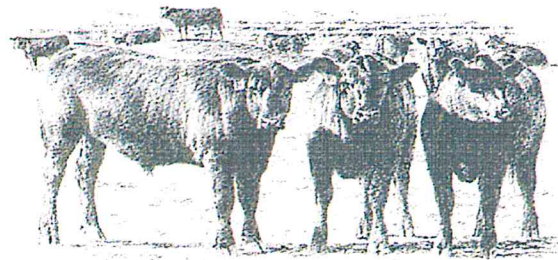
March 17, 24, 31

Fort Scott Livestock Auction

2131 Maple Rd, Fort Scott, KS 66701

9:30 AM

Timely topics related to beef cattle



Discussions may include:

- ◆ *Upcoming Extension Activities*
 - ◆ *Pasture Rental Rates*
 - ◆ *Poverty Grass*

This program will provide brief updates on timely and informative topics of interest to those in the cattle business.

The café will be open and fresh pie and coffee will be available for purchase.

Iola Office
620-365-2242

Erie Office
620-244-3826

Fort Scott Office
620-223-3720

*Knowledge
for Life*

Kansas State University is committed to making its services, activities and programs accessible to all participants. If you have special requirements due to a physical, vision, or hearing disability, contact Carla Nemecek, 620-365-2242.

Kansas State University Agricultural Experiment Station and Cooperative Extension Service
K-State Research and Extension is an equal opportunity provider and employer.


K-STATE
Research and Extension