

Cattle & Coffee Series

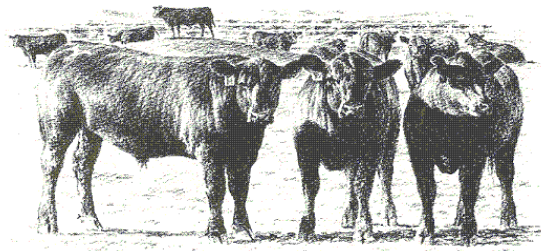
February 02, 09, 23

Southeast Kansas Livestock Market Cafe

Gas, KS

1:00 p.m.

Timely topics related to beef cattle



Discussions may include:

- ◆ *Upcoming Extension Activities*
 - ◆ *Fescue Endophyte*
 - ◆ *Poverty Grass*

Iola Office
620-365-2242

Erie Office
620-244-3826

Fort Scott Office
620-223-3720

*Knowledge
for Life*

This program will provide brief updates on timely and informative topics of interest to those in the cattle business.

The café will be open and fresh coffee will be available!

Kansas State University is committed to making its services, activities and programs accessible to all participants. If you have special requirements due to a physical, vision, or hearing disability, contact Carla Nemecek, 620-365-2242.

Kansas State University Agricultural Experiment Station and Cooperative Extension Service
K-State Research and Extension is an equal opportunity provider and employer.